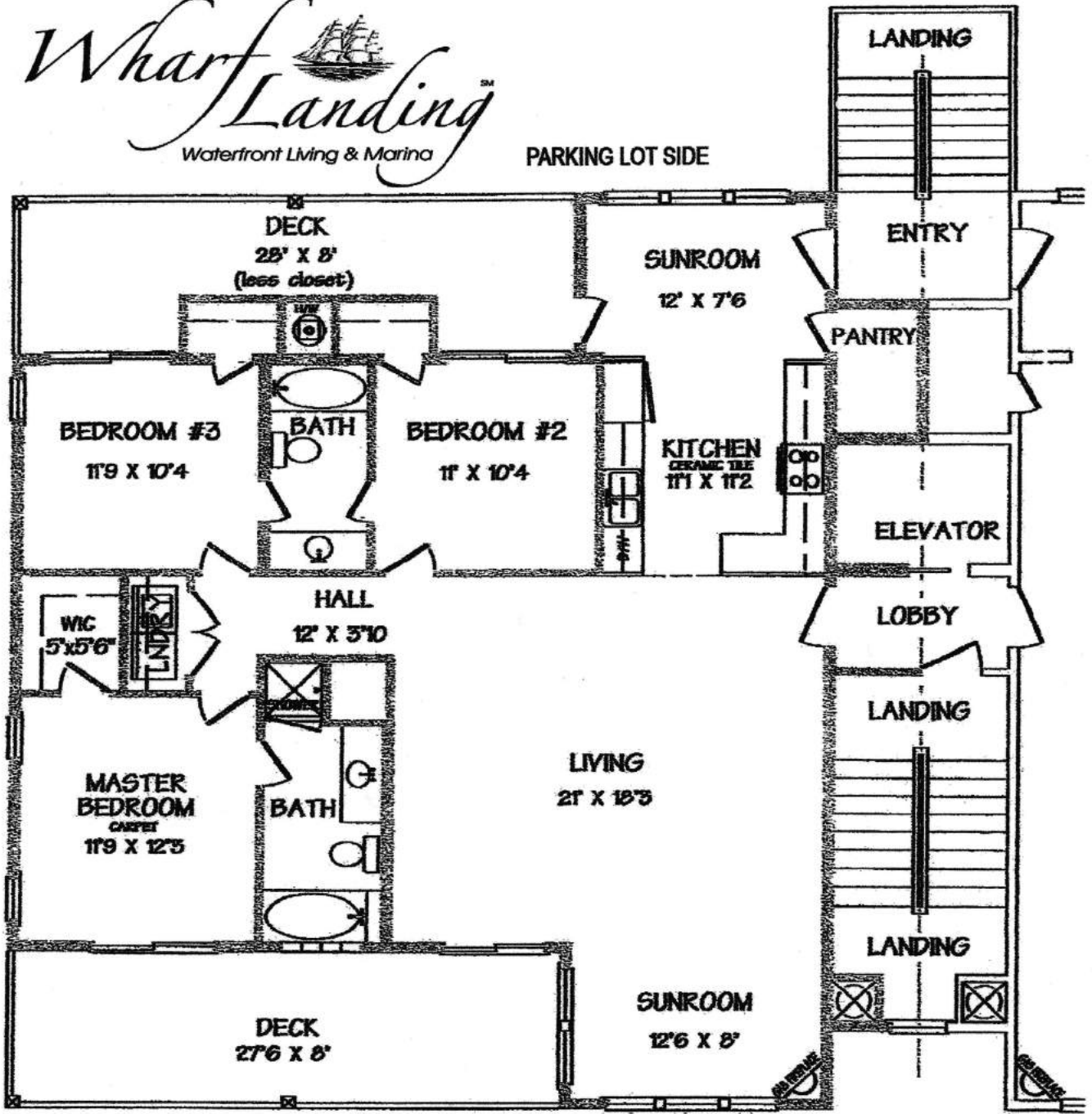


# Wharf Landing<sup>SM</sup>

Waterfront Living & Marina

PARKING LOT SIDE



## MARINA VIEW

MAIN LIVING 1,512 SQ. FT.  
 FRONT DECK 220 SQ. FT.  
 BACK DECK 186 SQ. FT.  
 BASED ON OUTSIDE WALL DIMENSIONS.  
 FINAL SQUARE FOOTAGE MAY VARY.

BUILDING 413/UNIT 9A